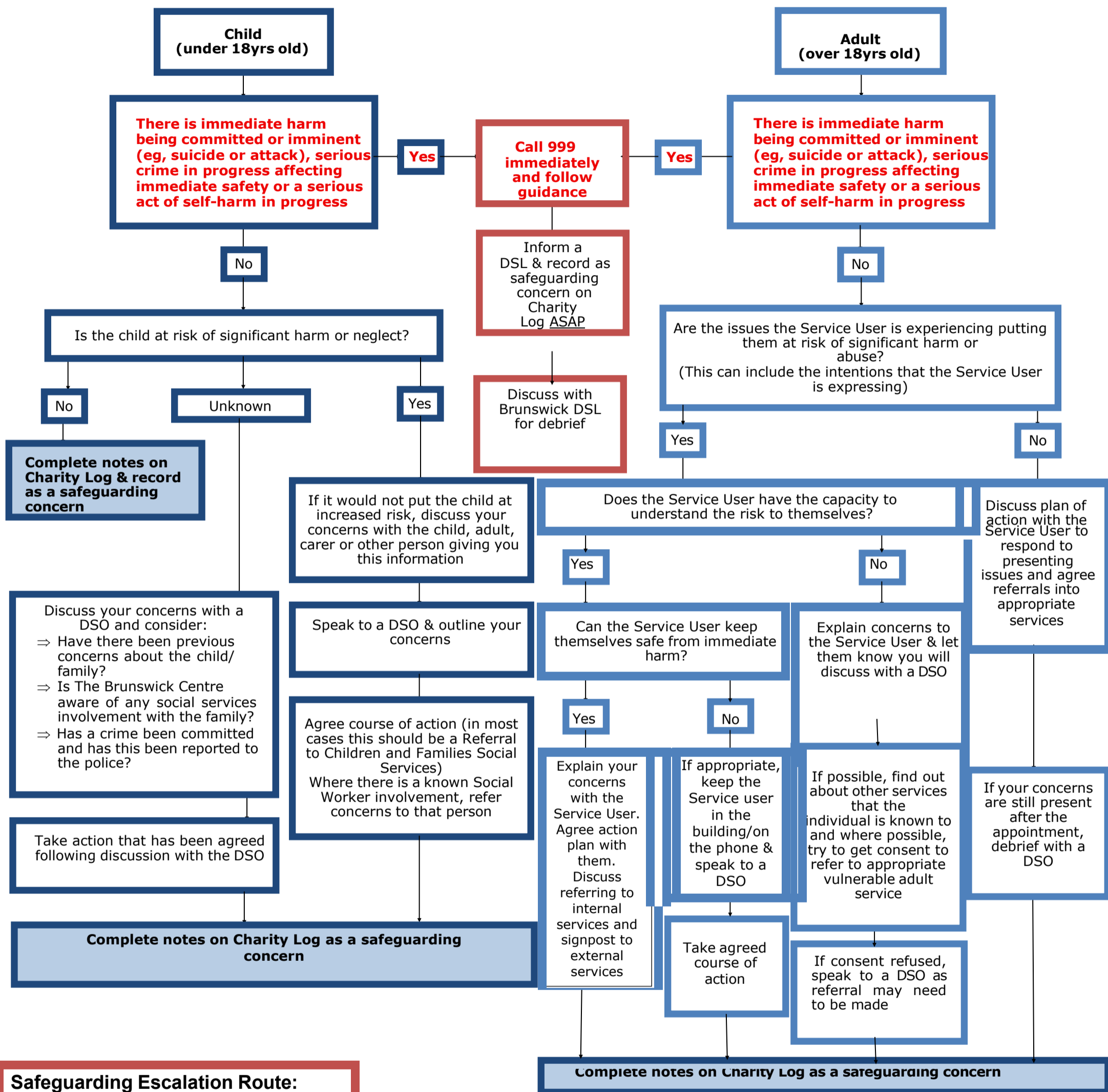


Safeguarding Concerns Flow Chart

These flow charts are only to be followed with presenting issues at The Brunswick Centre. If contact is being made by a professional from outside the organisation they must be advised to follow their employer's own safeguarding protocols



Safeguarding Escalation Route:

DSO: Daniel Lammin - 07949 122 262/ Diane Braken - 07442 491 625/ Lauren Thomas - 07498 986 203/ Matt Shiel - 07843 105 258

DSL: Lauren Edwards - 07902 046 078/ Lily Huggins - 07961 961 218/ John McKernaghan - 07703 187 968/ Ben Whalley - 07891 214 544/ Kathryn Hinchliff is the Trustee lead

If a Child Protection allegation is made against a staff member, therapist, counsellor, student on placement or volunteer then the Local Authority Designated Officer (LADO) MUST be informed within 24-hours.

Safeguarding Contacts: Calderdale
Adults: Gateway to Care 01422 393 000 (office hours)
 Emergency Duty Team 01422 288 000 (out of hours)
Children: MAST (Multi-Agency Screening Team) 01422 393 336 (office hours)
 Emergency Duty Team 01422 288 000 (out of hours)
LADO: <https://safeguarding.calderdale.gov.uk/report-concerns/>
 01422 394 055

Safeguarding contacts: Kirklees
Adults: Duty & Advice Team 01484 456 848
 24hr professionals line 01484 414 933
dutyandadvice@kirklees.gov.uk
LADO: www.kirklees.gov.uk/beta/working-with-children/lado.aspx
 01484 221 126

