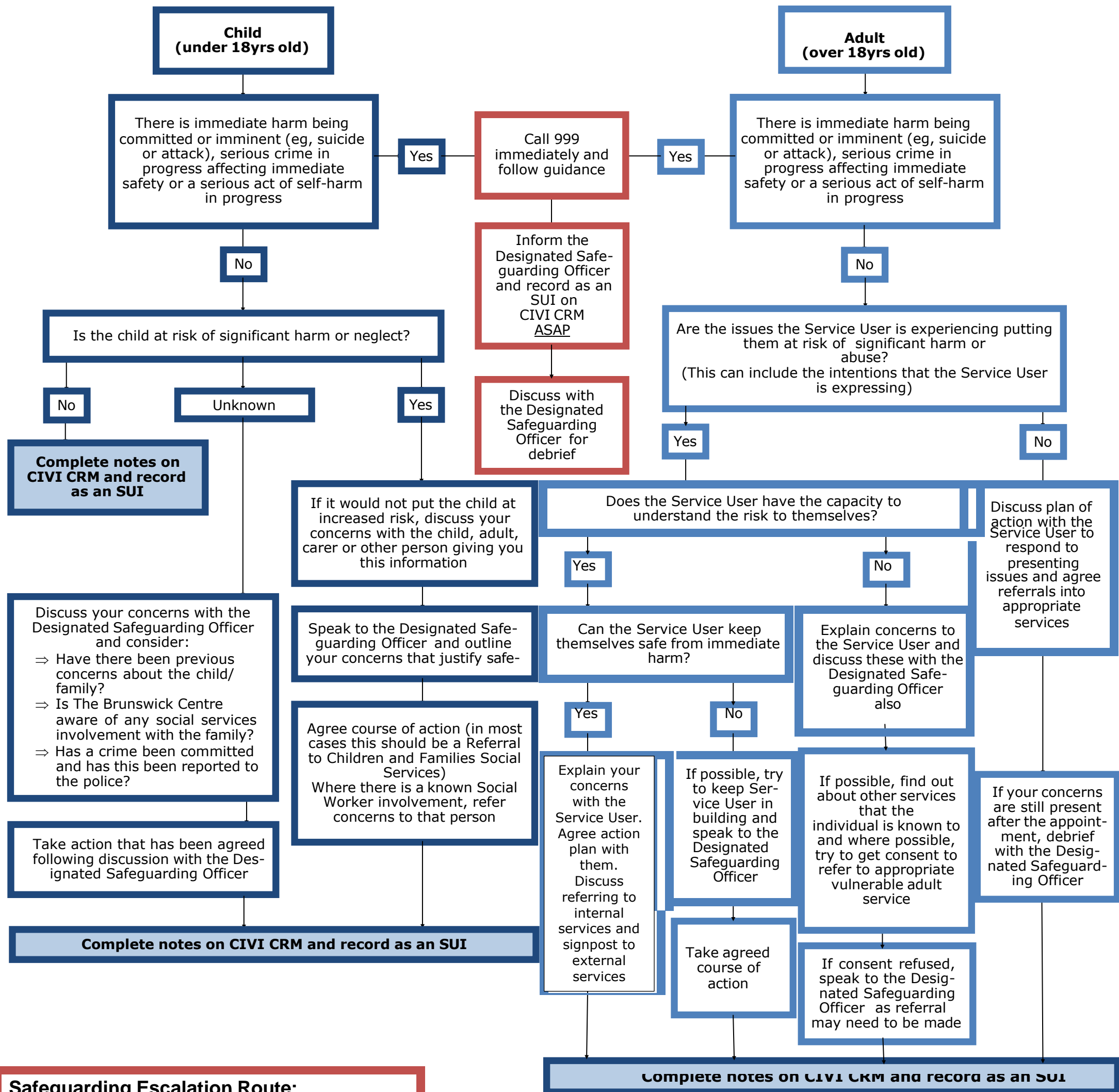


# Safeguarding Concerns Flow Chart

These flow charts are only to be followed with presenting issues at The Brunswick Centre. If contact is being made by a professional from outside the organisation they must be advised to follow their employer's own safeguarding protocols



## Safeguarding Escalation Route:

<b>Designated Safeguarding Lead</b> <b>John McKernaghan 07703 187 968</b>	<b>Trustee Safeguarding Lead</b> <b>Ben Whalley 07891 214 544</b>
--	--

If a Child Protection allegation is made against a staff member, therapist, counsellor, student on placement or volunteer then the Local Authority Designated Officer (LADO) MUST be informed within 24-hours.

**Safeguarding Contacts: Calderdale**

**Adults:** Gateway to Care 01422 393 336 (office hours)  
 Emergency Duty Team 01422 288 000 (out of hours)

**Children:** MAST (Multi-Agency Screening Team) 01422 393 336 (office hours)  
 Emergency Duty Team 01422 288 000 (out of hours)

**LADO:** [www.calderdale-safeguarding.co.uk/report-concerns/](http://www.calderdale-safeguarding.co.uk/report-concerns/)

**Safeguarding contacts: Kirklees**

**Adults:** Duty & Advice Team 01484 456 848  
 24hr professionals line 01484 414 960

**LADO:** [www.kirklees.gov.uk/beta/working-with-children/lado.aspx](http://www.kirklees.gov.uk/beta/working-with-children/lado.aspx)  
 01484 221 126